



F3784

T.E.T. THESE = THOSE

# #20 UHS Combo Cleaner/Maintainer

## PRODUCT DESCRIPTION:

**UHS Combo Cleaner/Maintainer** is a one product system that effectively deep cleans without dulling the finish gloss and provides added durability. Builds finish gloss with consecutive uses and extends the time between stripping and recoat cycles.

## FEATURES:

### Environmentally Friendly:

A neutral pH, contains no harsh alkalis. Reduced packaging reduces waste.

### Reduces Labor:

One product system deep cleans, revitalizes and enhances the finish gloss. Extends the stripping and recoating cycle.

### Cost Effective:

Proven to decrease the need to recoat and extends the stripping cycle. One 64 oz. bottle makes 128 gallons of ready-to-use solution (1:256 ratio).

### User Friendly:

Safe, non-flammable. One product system simplicity.

## PRODUCT SPECIFICATIONS:

pH (concentrated).....	9.0 ± 1.0
Appearance .....	Yellow Liquid
Fragrance .....	Citrus
Freezing Point.....	About 32°F
Solubility in Water .....	Complete
Flash Point.....	None to boiling

## INGREDIENTS:

Water .....	7732-18-5
Polyethylene glycol .....	25322-68-3
Dipropylene glycol n-butyl ether .....	29911-28-2
Undeceth-7 .....	34398-01-1
2-Cyclohexene-1-octanoic acid,	
5(or 6)-carboxy-4-hexyl .....	53980-88-4

DILUTIONS	HEALTH	FLAMMABILITY	REACTIVITY
CONCENTRATE	NFPA 1	NFPA 0	NFPA 0
CONCENTRAR	HMIS	HMIS	HMIS
(1:128 RATIO)	NFPA 0	NFPA 0	NFPA 0
(1:128 RAZÓN)	HMIS	HMIS	HMIS
(1:256 RATIO)	NFPA 0	NFPA 0	NFPA 0
(1:256 RAZÓN)	HMIS	HMIS	HMIS
PROPORCIÓN	SALUD	INFLAMABILIDAD	REACTIVIDAD

0	1	2	3	4
Minimal	Slight	Moderate	Serious	Severe
Mínimo	Mínimo	Moderar	Grave	Drástico

## ECOLOGICAL INFORMATION

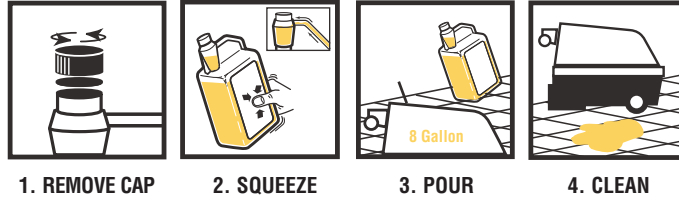
- Neutral pH
- Contains no Phosphorus
- Low VOC

# T.E.T.® #20 UHS Combo Cleaner/Maintainer LABOR SAVING RESTORER

## USE INFORMATION

*Always dust mop the floor first. Remove gum, labels and other attached soil deposits with a putty knife or long handled scraper.*

## DIRECTIONS



## DIRECTIONS

1. **REMOVE CAP** and seal.
2. **SQUEEZE BOTTLE** and fill the portion control cup. Excess cleaner will automatically flow back into the bottle.
3. **POUR** the contents of the cup into the automatic scrubber solution tank (1 control cup per 8 gallons; 1:256 ratio).
4. **CLEAN** using an automatic scrubber. **BURNISH** for optimum results.

## WARNING

Causes eye irritation. May cause skin irritation. Harmful to aquatic life. Harmful to aquatic life with long lasting effects.

## Prevention

Wash thoroughly after handling. Avoid release to the environment.

## Response

If in eyes: Rinse cautiously with water for several minutes. Remove contact lenses, if present and easy to do. Continue rinsing. If eye irritation persists: Get medical advice / attention.

## Storage

Store away from incompatible materials.

## Disposal

Dispose of contents / container in accordance with local / regional / national / international regulations.

**KEEP OUT OF REACH OF CHILDREN.**

## PERSONAL PROTECTION:

**Respiratory Protection:** Not needed under normal conditions.

**Ventilation:** Use with adequate ventilation.

**Eye Protection:** Safety glasses recommended.

**Protective Gloves:** Protective gloves optional.

**Other Protective Clothing or**

**Equipment:** Wear clothing as necessary to prevent skin contact.

## TRANSPORTATION

## INFORMATION:

**U.S. DOT - Proper Shipping**

**Name:** Not regulated by DOT.

**Marine Pollutant:** No.

## Franklin Cleaning Technology

One Fuller Way

Great Bend, KS 67530

United States

CHEMTREC (800) 424-9300

Emergency (620) 792-1711

24 hour Emergency (800) 424-9300

www.fullercommercial.com

F3784TDS-0615